

CATALOG  
2023



# ELECTRIC BIKE

ELECTRIC BICYCLE

VÉLO ÉLECTRIQUE

ELEKTRO FAHRRAD

BICICLETTA ELETTRICA

ELEKTRISCHE FIETS

ELEKTRISK CYKEL



# N MOTO

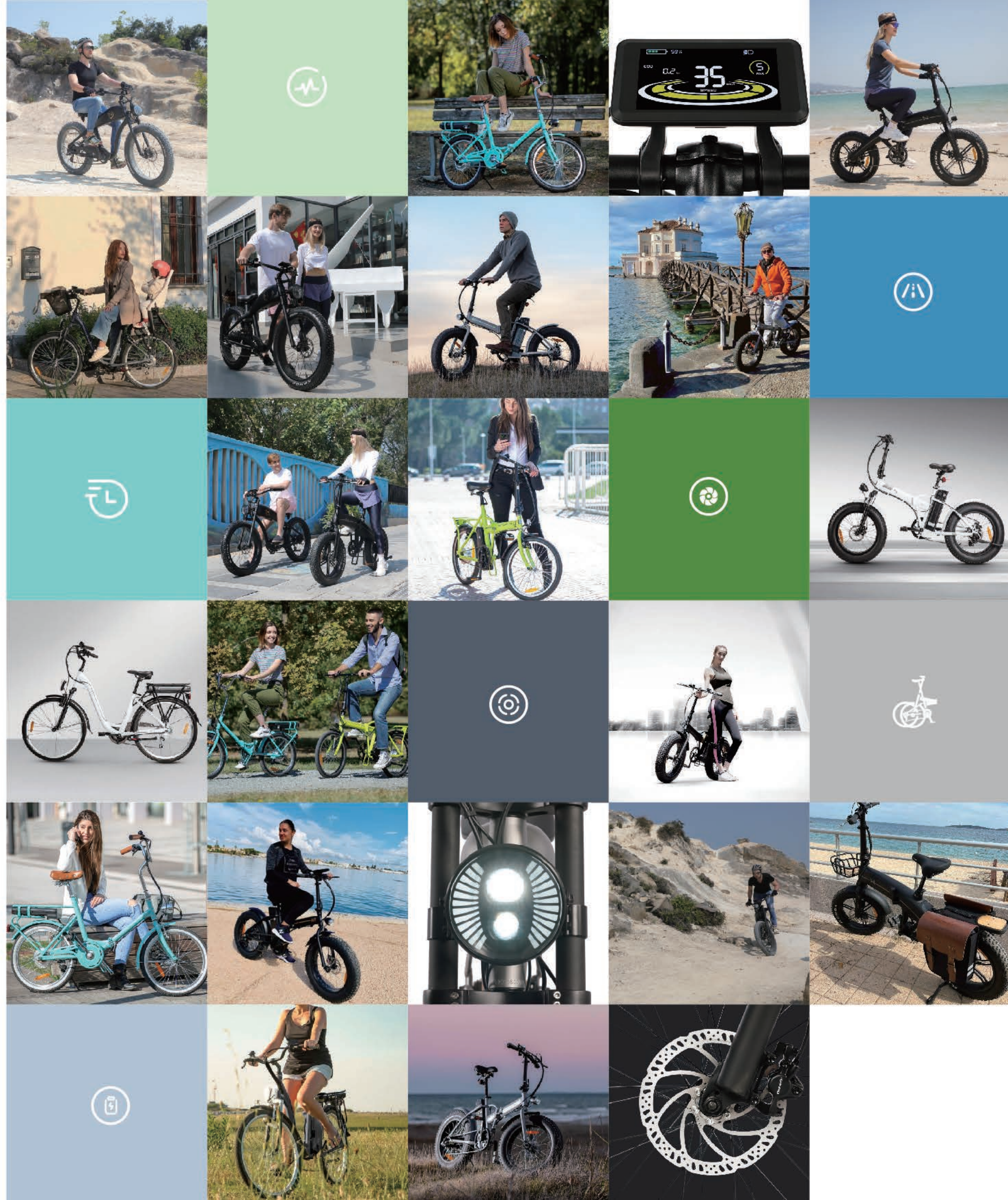
ENERGIZE YOUR LIFESTYLE

The Cost of Personal Movements is Increasing more and more Expensive. Cheap & Ecological Means of Transport Come Into Existence—Electric Vehicles.

Meanwhile, There are many countries encouraging zero-emission travel and provide subsidies for the purchasing of electric vehicles.

N Moto has Specialized in Electric Vehicles Products, That Meets The Needs of a Vast Customers.

Quality, Service, Design are Our Priorities.





## COMPANY PROFILE

---



Our story starts since 1999, When we built our brand and factory.

Thanks to the Trust of our Valued Customers, With 24-year Development, We grow up with Two Factories, One Marketing Center, One Overseas Branch, One Laboratory, Which Provide Annual output of one million electric vehicles to meet all markets needs.

We always give top priority to the needs of users, with products integrating technology and fashion. Its streamlined appearance, careful detail polishing and excellent quality are closely combined. So that more and more people can enjoy the convenience of two-wheeled travel.



**24<sup>+</sup>**  
YEARS  
DEVELOPMENT



> **IN 2023**  
Lvneng has exported to over 58 countries.

> **IN 2022**  
Start the "LN MOTO" brand road.

> **IN 2020**  
Independent design and development of new model.

> **IN 2017**  
The first EEC certified model entered Europe market.

> **IN 2015**  
Global sales had exceeded 1,000,000 units.

> **IN 2010**  
The international trade center was established.

> **IN 2007**  
Factory Phase II was completed and put into operation.



> **IN 1999**  
Jiangsu Lvneng Electrical Bicycle Technology Co., Ltd. was founded.





## PRODUCTS

---

We Produce high Quality of ebikes with our own Design.  
Some of models are Patented.

All ebikes will be Guaranteed with one year and frames with  
Five years Warranty.



ACE



ALPHA



AIR



20M04



20M05



26C06



*Electric*  
**Bike**





< **ACE** SERIES

CE EN15194 / CPSC

ACE is a Vintage Electric bike model. The Battery is Powered by LG 21700, Max Battery Capacity could Reach 1040wh. What's more, The Battery could be taken out Easily. The Frame with putty treatment Makes the ACE model attractive.







4.0" TFT Display



TEKTRO Hydraulic Brake



Removable battery

< 3 COLOR



Silver



Matt Black



Matt Army Green



4.2" Motorized LED



**25** km/h  
Max. Speed



**250** w  
Motor Power



**50** km  
Max. Range



**540** Wh  
Battery Power

TECHNICAL DATA

Battery	36V15AH, powered by LG 21700
Motor	36V350W Bafang rear hub motor
Controller	LD power, sinewave
Charger	42V3A
Charging time	5-6 hrs
Meter	TFT 4.0 display, Yolin
Brake	Tektro hydraulic brakes
Tire	26*4.0 Kenda
Max speed	25 km/h
Max Range	50 km by PAS
Max Loading	105 kg
Slope Hill-ability	8°
USB	Meter USB 5V1A
Dimension	2020*700*1050 mm
Wheelbase	1270 mm
Container loading	126pcs/40HQ
Delivery box	1650*340*800 mm





< **ALPHA** SERIES

CE EN15194 / CPSC

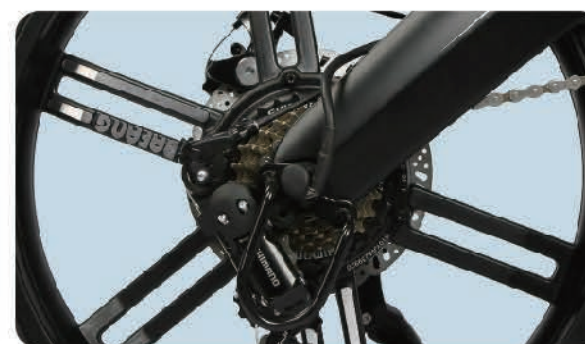
Alpha model is a Complete design model with our own Patent. Frame is Die-Casting, as well as fork. The max speed could reach 25KM/H, where we assist an integrated wheel BAFANG, Powered by LG 21700, Which could get a range of 60KM max.



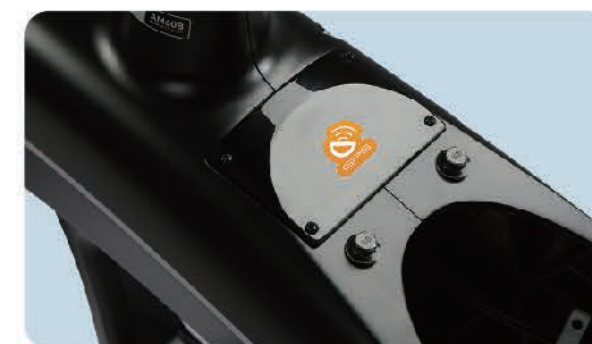




King-Meter 3.5" IPS



BAFANG Integrated Wheel



GPS optional

< 2 COLOR



Matt Black



Matt Blue



**25** km/h  
Max. Speed



**250** w  
Motor Power



**60** km  
Max. Range



**540** Wh  
Battery Power



TECHNICAL DATA

Battery	36V15AH, powered by LG 21700
Motor	36V250W Bafang integrated wheel
Controller	LD power, sinewave
Charger	42V3A
Charging time	5-6 hrs
Meter	IPS 3.5", Kingmeter W/USB
Brake	Tektro disc brake W/Rotor 180mm
Tire	20*4.0 Kenda
Max speed	25 km/h
Max Range	60 km by PAS
Max Loading	90 kg
Slope Hill-ability	8°
USB	Meter USB 5V1A
Dimension	1730*615*1400 mm
Wheelbase	1145 mm
Container loading	153pcs/40HQ
Delivery box	1780*290*890 mm





< **AIR** SERIES

CE EN15194 / CPSC

A typical electric city bike. We mount with a center motor which could provide a max speed of 25KM/H. While the battery is powered by LG 21700 ,max capacity could reach 720WH. Easy removed. While we could also mount with the butterfly handlebar and pannier, convert this ebike to an e-trekking with long range.







TEKTRO Hydraulic Brake



Center Motor



Lithium Battery

← 2 COLOR



Glossy Red



Matt Blue



  
25 km/h  
Max. Speed

  
250 w  
Motor Power

  
60 km  
Max. Range

  
720 Wh  
Battery Power



TECHNICAL DATA	
Battery	Lithium-Ion, LG 21700, 36V20AH
Motor	36V250W bafang hub motor
Controller	Built-in
Charger	42V3A
Charging time	5-6 hrs
Meter	Keydisp, Smart LCD
Brake	Tektro hydraulic brakes
Tire	27.5" x 2.0, Innova
Max speed	25 km/h
Max Range	60 km by PAS
Max Loading	120 kg
Slope Hill-ability	8°
USB	N/A
Dimension	1230*660*1050 mm
Wheelbase	1160 mm
Container loading	126pcs/40HQ
Delivery box	1650*270*860 mm





< **20M04** SERIES

CE EN15194 / CPSC

A Typical Folding Electric Bike. Unisex, all people could have a 20M04. Battery could be Taken out Easily and max Capacity could reach 960WH. At the Speed of 25KM/H, max Range could get 50KM.







ZOOM Disc Brake



7 Speed Shimano Gear



LCD Colorful Display

< 3 COLOR



White



Matt Black



Matt army Green



25 km/h  
Max. Speed



250 w  
Motor Power



50 km  
Max. Range



540 Wh  
Battery Power



TECHNICAL DATA

Battery	Lithium-Ion,18650,36V15AH
Motor	Rear Drive,36V250W,45NM
Controller	Intelligent,Sine wave
Charger	Dpower,42V3A
Charging time	5-6 hrs
Display	Yolin,80C-C, LCD colorful 3.0"
USB	N/A
Harness	2 in 4
Brake system	Zoom disc brakes W/rotor 160mm
Tires	Kenda,20*4.0,K1188
Gears	Shimano Tourney 7
Dimension	1800*560*1105 mm
Wheelbase	1200 mm
Speed	25 km/h
Range	50 km by PAS
Max Load	110 kg
Container load	215PCS/40HQ
Delivery Box	1450*280*750 mm(85%)





< **20M05** SERIES

CE EN15194 / CPSC

A typical folding electric bike. Unisex, all people could have a 20M05. Battery could be taken out easily and max capacity could reach 960WH. At the speed of 25KM/H, max range could get 50KM.







ZOOM Disc Brake



7 Speed Shimano Gear



LCD Colorful Display

3 COLOR



White



Matt Black



Glossy Red



25 km/h  
Max. Speed



250 w  
Motor Power



50 km  
Max. Range



540 Wh  
Battery Power



TECHNICAL DATA

Battery	Lithium-Ion,18650,36V15AH
Motor	Rear Drive,36V250W,45NM
Controller	Intelligent,Sine wave
Charger	Dpower,42V3A
Charging time	5-6 hrs
Display	Yolin,80C-C, LCD colorful 3.0"
USB	N/A
Harness	2 in 4
Brake system	Zoom disc brakes W/rotor 160mm
Tires	Kenda,20*4.0,K1188
Gears	Shimano Tourney 7
Dimension	1850*560*1105 mm
Wheelbase	1243 mm
Speed	25 km/h
Range	50 km by PAS
Max Load	110 kg
Container load	215PCS/40HQ
Delivery Box	1450*280*750 mm(85%)





< **2606** SERIES

CE EN15194 / CPSC

A Typical Electric City Bike, Step Thru, Elders and Ladies can ride the ebike.  
Battery could be taken out easily. Good choice for Commute and Leisure.







LED Display



ZOOM Disc Brake



6 Speed Shimano Gear

< 2 COLOR



White



Matt Black



**25** km/h  
Max. Speed



**250** W  
Motor Power



**60** km  
Max. Range



**360** Wh  
Battery Power




TECHNICAL DATA

Battery	Lithium-Ion, 18650, 36V10AH
Motor	Rear Drive, 36V250W, 35NM
Controller	Intelligent, Sine wave
Charger	Dpower, 42V2A
Charging time	5-6hrs
Display	KingMeter, LED790
USB	N/A
Harness	N/A
Brake system	Zoom disc brakes W/rotor 160mm
Tires	Kenda, 26*1.95
Gears	Shimano Tourney 6+Revoshift
Dimension	1800*580*1150 mm
Wheelbase	1115 mm
Speed	25 km/h
Range	60 km by PAS
Max Load	120 kg
Container load	216PCS/40HQ
Delivery Box	1400*250*870 mm(85%)



# ACCESSORIES

## UPGRADES

	 ACE	 ALPHA	 AIR	 20M04	 20M05	 26C06
 Front Light	★	★	★	★	★	★
 Tail Light	○	★	★	★	★	★
 Throttle	○	○	○	○	○	○
 Front Basket	○	○	○	○	○	○
 Rear Rack	○	○	★	○	○	★
 Fenders	○	○	★	○	○	★
 Hydraulic Brakes	○	★	★	○	○	★
 Pannier	○	○	○	○	○	○
 Torque Sensor	○	○	★	○	○	○

★ Standard ○ Options



MAIN SUPPLIERS







ENERGIZE YOUR LIFESTYLE



[www.lvnengebike.com](http://www.lvnengebike.com)

#### 📍 Factory

**Jiangsu Lvneng Electrical Bicycle Technology Co.,Ltd**  
No.158,Shengjia Village,Hengshanqiao Town,Wujin district,Changzhou  
213119,Jiangsu,China  
[export@lvnengebike.com](mailto:export@lvnengebike.com)

#### 📍 Marketing Center

**Jiangsu Kangyichen International Trade Co.Ltd.**  
Room 701,Building 2,Hengsheng T-park,Tianning district,Changzhou  
213115,Jiangsu,China  
0519 6821 7082

#### 📍 Oversea Branch

**Rui Xing International Trade S.R.L.**  
Piazzale Biancamano 1 Milano(Mi) Cap 20154  
[Ruixing@pec.it](mailto:Ruixing@pec.it)

